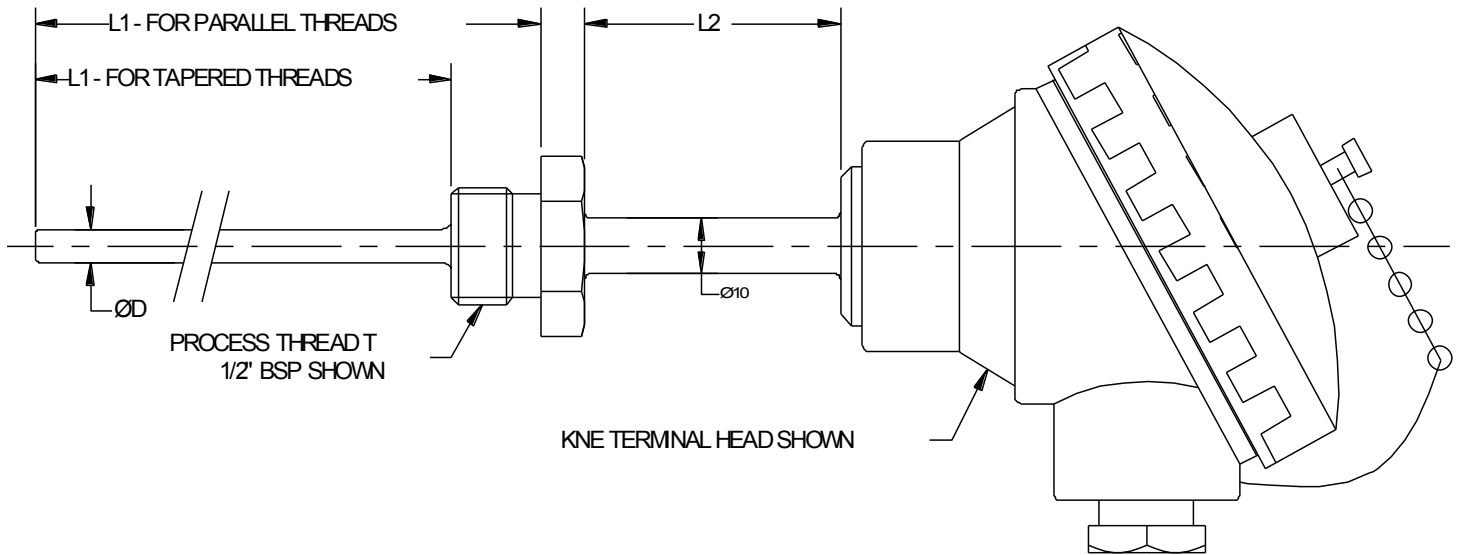


PPL5-P

Platinum Resistance Thermometer with Process Connection, Cooling Neck and Terminal Head

- Probe with Process Thread and Extension below Terminal Head
- Fixed Male Process Thread plus Lagging Extension/ Cooling Neck.
- Screw Sensor directly into a Process or Thermowell
- Terminal Head above Insulation / Electronics in Head Protected from elevated temperatures
- Choice of Head Fittings and Thread Sizes
- Manufactured to your requirements
- UKAS or Traceable Calibration Available.



Specifications

Sensor Type	Platinum Resistance Thermometer—Pt100 or Pt1000
Operating Range	-50 to 250 °C (Unless Otherwise Requested)
Sheath Material	316 stainless steel
Tolerance Band	Class B, Class A, 1/3 DIN, 1/5 DIN or 1/10 DIN
Wiring System	2, 3 or 4 wire, Simplex or Duplex
Head Types	A - KNE Aluminium Alloy, IP68 B - KSE Aluminium Alloy, IP68 C - ABS, IP67 D - Glass Filled Nylon, IP65 E - 316 stainless steel, IP68 (Other heads available upon request)
Head Options	A - Ceramic Terminal Block B - In Head Transmitter—SEM206P (Specify Range) (Other transmitters available including ATEX) C - Tails for Customers Own Transmitter

Process Parameters Ltd

Unit 10A, Waldeck House, Waldeck Road, Maidenhead, Berkshire, SL6 8BR

Tel: 01628 778688

Fax: 01628 777714

Email: sales@processparameters.co.uk

Web: www.processparameters.co.uk

PPL5-P

Platinum Resistance Thermometer with Process Connection, Cooling Neck and Terminal Head

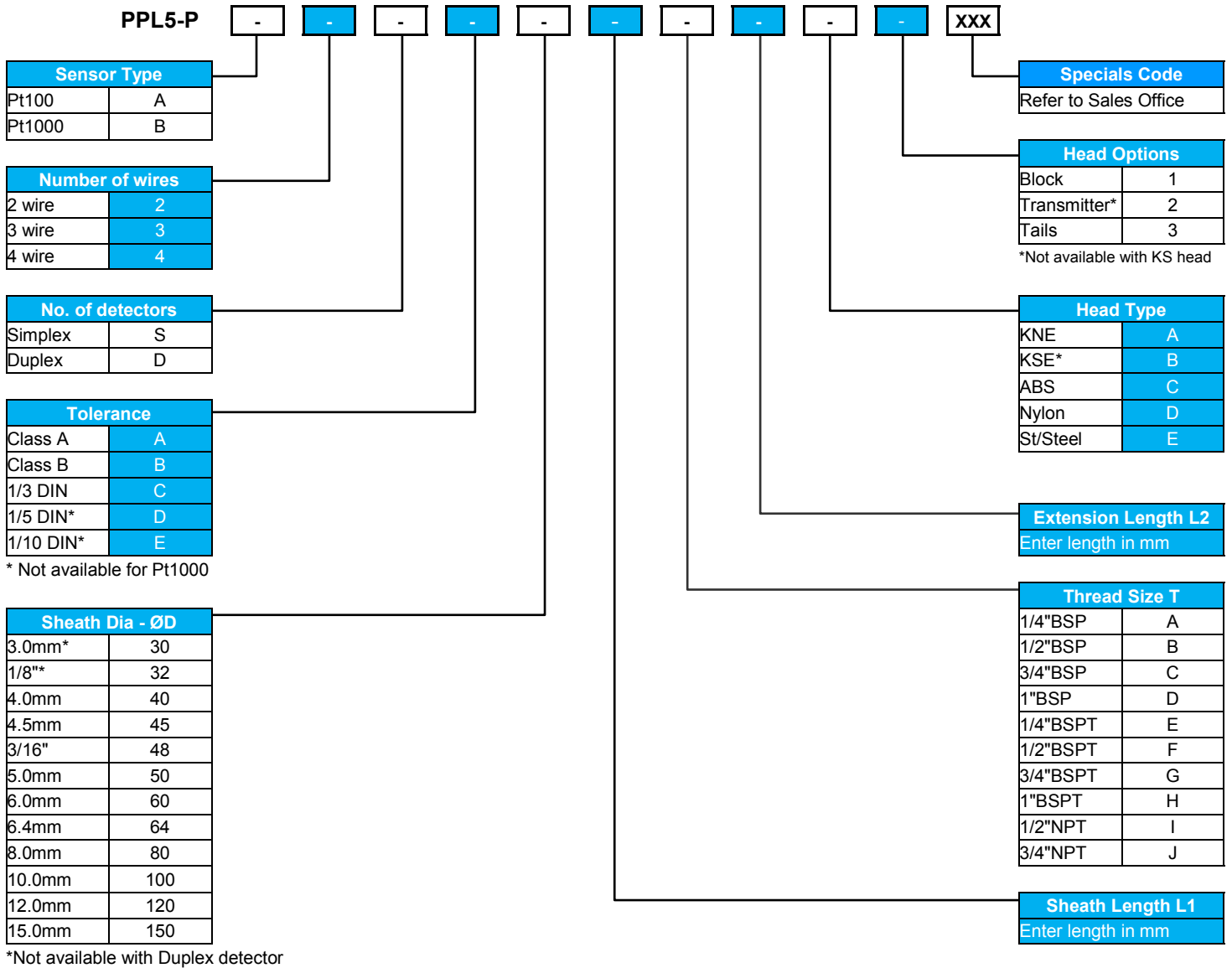
TEMPERATURE INSTRUMENTATION SPECIALISTS

Temperature Probes

Infrared

Thermal Imaging

Calibration



NOTE: Some option combinations not possible.

This data sheet gives details of the most popular options available for this type of sensor but is not intended to give an exhaustive list of possibilities. If you have a special requirement please do not hesitate to contact our sales office for assistance.

Accessories for your sensor...



Compression Fittings



Signal Conditioners



Pockets / Thermowells



Extension Cables

Process Parameters Ltd

Unit 10A, Waldeck House, Waldeck Road, Maidenhead, Berkshire, SL6 8BR

Tel: 01628 778688

Fax: 01628 777714

Email: sales@processparameters.co.uk

Web: www.processparameters.co.uk